

P. SECTATOR, *Pascoe, ib.* p. 358.
Hab. South Australia.

DEPSAGES.

Depsages, *Pascoe, ib.* p. 359.

DEPSAGES GRANULOSA. (*Lamia granulosa, Guérin, Voy. de la Coq.*
 ii. p. 133, pl. 7. f. 8.)
Hab. New South Wales.

MONOCHAMUS.

Monochamus, *Serville, Ann. Soc. Entom. de France*, iv. p. 91.

MONOCHAMUS FISTULATOR. (*Lamia fistulator, Germar, Ins. Spec.*
nov. p. 478.)
Hab. New South Wales; Queensland.

M. MIXTUS, *Hope, Ann. & Mag. Nat. Hist.* 1842, ix. p. 428.
Hab. Port Essington; Queensland.

M. ARGENTATUS, *Hope, MS.?*
Hab. New South Wales; Victoria.

M. OVINUS, *Pascoe, Journ. of Entom.* ii. p. 228.
Hab. South Australia.

METON.

Meton, *Pascoe, ib.* i. p. 342.

METON DIGGLESII, *Pascoe, Trans. Ent. Soc.* ser. 2. v. p. 59.
Hab. Queensland.

M. TROPICUS, *Pascoe, Ann. & Mag. Nat. Hist.* ser. 3. ix. p. 465.
Hab. Lizard Island.

BATOCERA.

Batocera, *Laporte de Castelneau, Hist. Nat. des Ins.* ii. p. 470.

BATOCERA RUBUS. (*Cerambyx rubus, Linn. Syst. Nat.* ed. 12. ii.
 p. 625. *Batocera rubus, Blanchard, Hist. Nat. des Ins.* ii. p. 158,
 pl. 12. f. 4.)

B. BOISDUVALII. (*Lamia Boisduvalii, Hope, Charlesworth's Mag. Nat.*
Hist. iii. p. 231.)
Hab. Clarence River?

HYPSELOMINÆ.

CALLIPYRGA.

Callipyrga, *Newman, Entom.* p. 414.

CALLIPYRGA TURRITA, *Newman, ib.* p. 414; *White, Stokes's Discov.*
in Aust. pl. 2. f. 5. (*Zygodocera pallidicornis, J. Thomson, Arch. Ent.*
 i. p. 190.)

Hab. New South Wales; Queensland.

ZYGOCERA.

Zygocera, *Erichson*, *Wiegmann's Arch.* 1842, p. 224.

ZYGOCERA PRUINOSA. (*Acanthocinus pruinus* (*Macleay*), *Boisduval*,
Voy. de l'Astrol. Ent. p. 489; *Westwood, Trans. Ent. Soc.* ser. 3. i.
p. 626, pl. 25. f. 6.)

Hab. New South Wales; Queensland.

Z. PENTHEOIDES, *Pascoe, Trans. Ent. Soc.* ser. 2. v. p. 32.

Hab. Western Australia.

Z. CENOSA, *Erichson, Wiegmann's Arch.* 1842, p. 223.

Hab. Tasmania.

Z. METALLICA, *Westwood, Trans. Ent. Soc.* ser. 3. i. p. 627, pl. 25.
f. 7.

Hab. South Australia; Western Australia.

DEMÓNASSA.

Demonassa, *J. Thomson, Syst. Ceramb.* p. 327.

DEMÓNASSA MACLEAYI. (*Zygocera Macleayi*, *Pascoe, Trans. Ent.*
Soc. ser. 2. v. p. 32. *Demonassa funeraria*, *Thomson, l. c.* p. 328.)

Hab. New South Wales.

DISTERNA.

Disterna, *J. Thomson, l. c.* p. 88.

DISTERNA LUGUBRIS. (*Zygocera lugubris*, *Pascoe, l. c.* ser. 3. i. p. 541.)

Hab. New South Wales.

D. LUCTUOSA. (*Zygocera luctuosa*, *Pascoe, Ann. & Mag. Nat. Hist.*
ser. 3. ix. p. 465.)

Hab. Lizard Island.

D. PLUMIFERA. (*Zygocera plumifera*, *Pascoe, Trans. Ent. Soc.* ser. 2.
v. p. 33.)

Hab. New South Wales.

D. CUNEATA. (*Zygocera cuneata*, *Pascoe, ib.* ser. 2. v. p. 33.)

Hab. New South Wales.

D. PUMILA. (*Zygocera pumila*, *Pascoe, ib.* ser. 3. i. p. 542.)

Hab. New South Wales.

D. BIFASCIATA. (*Zygocera bifasciata*, *Pascoe, ib.* ser. 2. v. p. 32.)

Hab. New South Wales.

ORICOPIS.

Oricopis, *Pascoe, ib.* ser. 3. i. p. 543.

ORICOPIS UMBROSUS, *Pascoe, ib.* ser. 3. i. p. 543, pl. 23. f. 2.

Hab. Port Curtis.

THYADA.

Thyada, *Pascoe, Trans. Ent. Soc.* ser. 3. i. p. 544.

THYADA BARBICORNIS. (*Zygocera barbicornis, Pascoe, ib.* ser. 2. v. p. 34; ser. 3. i. p. 544, pl. 22. f. 4.)

Hab. South Australia; New South Wales; Queensland.

DYSTHÆTA.

Dysthæta, *Pascoe, ib.* ser. 2. v. p. 31.

DYSTHÆTA ANOMALA, *Pascoe, ib.* p. 31, pl. 2. f. 6.

Hab. New South Wales; Queensland.

DORCADIONINÆ.

MICROTRAGUS.

Microtragus, (*White*) *Pascoe, Journ. of Entom.* ii. p. 360.

MICROTRAGUS ARACHNE, *Pascoe, ib.* ii. p. 361.

Hab. Western Australia.

M. STICTICUS, *Pascoe, antè*, p. 86.

Hab. —?

M. SENEX, *White, Stokes's Discoveries in Australia*, i. p. 511, pl. 2. f. 7.

Hab. —?

M. EREMITA, *Pascoe, Journ. of Entom.* ii. p. 342.

Hab. South Australia (The Murray).

M. MORMON, *Pascoe, ib.* ii. p. 161.

Hab. South Australia (The Murray).

M. WATERHOUSEI, *Pascoe, ib.* p. 229.

Hab. Kangaroo Island.

M. AMYCTEROIDES, *Pascoe, Trans. Ent. Soc.* ser. 2. v. p. 61.

Hab. Queensland.

ATHEMISTUS.

Athemistus, *Pascoe, ib.* ser. 2. v. p. 49.

ATHEMISTUS RUGOSULUS. (*Lamia rugosula, Guérin, Voy. de la Coq.* ii. p. 134, pl. 7. f. 9.)

Hab. New South Wales.

A. PUBESCENS, *Pascoe, Journ. of Entom.* i. p. 352.

Hab. Victoria.

A. ARMITAGEI, *Pascoe, antè*, p. 87.

Hab. New South Wales.

A. FUNEREUS, *Pascoe, antè*, p. 87.

Hab. New South Wales.

CERÆGIDION.

Cerægidion, *Boisduval, Voy. de l'Astrol.* (1835) p. 492; *Mag. de Zool.* 1835.

CERÆGIDION HORRENS, *Boisd. Voy. de l'Astr.* p. 493; *Mag. de Zool.* 1835, pl. 127.

Hab. Australia (north coast).

MESOLITA.

Mesolita, *Pascoe, Journ. of Entom.* i. p. 362.

MESOLITA TRANSVERSA, *Pascoe, ib.* p. 363, pl. 17. f. 7.

Hab. Queensland.

M. LINEOLATA, *Pascoe, ib.*

Hab. Queensland.

APOMECCYNINÆ.

APOMECCYNA.

Apomeccyna, *Serville, Ann. Soc. Ent. de France*, iv. p. 77.

APOMECCYNA HISTRIO. (?*Lamia histrio, Fabricius, Ent. Syst.* ii. p. 288.)

Hab. Australia (north).

A. NIGRITA, *Pascoe, Trans. Ent. Soc.* ser. 2. v. p. 49.

Hab. Australia (North).

HATHLIODES.

Hathliodes, *Pascoe, antè*, p. 88.

Mycerinus, J. Thomson (in pt.).

Hathlia, Dejean (in pt.).

HATHLIODES GRAMMICUS. (*Mycerinus grammicus, Pascoe, Trans. Ent. Soc.* ser. 2. p. 49.)

Hab. Australia (interior towards the north).

H. MORATUS, *Pascoe, antè*, p. 89.

Hab. Australia (North).

H. MURINUS. (*Hathlia murina, Pascoe, Trans. Ent. Soc.* ser. 2. v. p. 50.)

Hab. Australia (interior towards the north).

H. ARIDUS. (*Mycerinus aridus, Pascoe, Ann. & Mag. Nat. Hist.* ser. 3. ix. p. 466. *Mycerinoopsis arida, Thomson, Syst. Ceramb.* p. 50.)

Hab. Lizard Island.

H. UNIFORMIS. (*Mycerinus uniformis, Pascoe, Trans. Ent. Soc.* ser. 3. i. p. 546).

Hab. Port Curtis.

H. QUADRILINEATUS. (*Hathlia quadrilineata, Hope, Ann. & Mag. Nat. Hist.* 1842, ix. p. 429.)

Hab. Port Essington; Port Curtis; South Australia (Gawler).

H. LACTEOLUS. (*Hathlia lacteola*, *Hope, ib.* p. 429.)

Hab. Port Essington.

H. MELANOCEPHALUS. (*Hathlia melanocephala*, *Hope, ib.* p. 430. H. *gracilis*, *Voy. au Pôle Sud*, iv. p. 301, pl. 17. f. 18.)

Hab. Port Essington; Raffles Bay.

H. LINEELLUS. (*Hathlia lineella*, *Hope, ib.* p. 430.)

Hab. Port Essington.

LYCHROSIS.

Lychrosis, *Pascoe, antè*, p. 89.

LYCHROSIS LUCTUOSUS. (*Mycerinus luctuosus*, *Pascoe, Trans. Ent. Soc.* ser. 3. i. p. 546, pl. 22. f. 5.)

Hab. Port Curtis.

PHÆAPATE.

Phæapate, *Pascoe, Journ. of Entom.* ii. p. 363.

PHÆAPATE ALBULA, *Pascoe, ib.* p. 363.

Hab. Queensland.

PRAONETHA.

Praonetha, *Blanchard* (scrip. *Prioneta*), *Voy. au Pôle Sud*, iv. p. 272

Pterolophia, *Newman, Entom.* p. 370.

Notolophia, *Brit. Mus.*

PRAONETHA DISPERSA. (*Notolophia dispersa* *Pascoe, Trans. Ent. Soc.* ser. 2. v. p. 47.)

Hab. Australia (north coast).

P. PLEURICAUSTA, *Pascoe, antè*, p. 89.

Hab. Port Albany.

SYBRA.

Sybra, *Pascoe, Trans. Ent. Soc.* ser. 3. iv. p. 198.

SYBRA INCIVILIS. (*Ropica incivilis*, *Pascoe, ib.* i. p. 546.)

Hab. Port Curtis.

S. ACUTA. (*Ropica geminata*, *Pascoe, ib.* p. 547, non *Klug.*)

Hab. New South Wales.

S. CENTURIO, *Pascoe, antè*, p. 90.

Hab. Sydney.

ROPICA.

Ropica, *Pascoe, Trans. Ent. Soc.* ser. 2. iv. p. 247.

ROPICA EXOCENTROIDES. (*Sybra exocentroides*, *Pascoe, ib.* v. p. 61.)

Hab. Queensland.

ATIMURA.

Atimura, *Pascoe, ib.* ser. 3. i. p. 548.

ATIMURA TERMINATA, *Pascoe, ib.* pl. 23. f. 6.

Hab. Port Curtis.

ITHEUM.

Itheum, *Pascoe, Journ. of Entom.* ii. p. 230.

ITHEUM VITTIGERUM, *Pascoe, ib.*, pl. 11. f. 9.

Hab. South Australia.

I. LINEARE, *Pascoe, ib.*

Hab. South Australia (Adelaide, Port Lincoln).

GENUS NOVUM.

Gen. nov. LEPIDA. (*Anæsthetis lepida, Germar, Linn. Ent.* iii. p. 228.)

Hab. South Australia.

ZYGRITA.

Zygrita, *J. Thomson, Essai, &c.* p. 69.

Cylindrodema, Cat. name.

ZYGRITA DIVA, *Thomson, ib.* p. 69. (*Zygrita nigro-zonata, var., ejusd.*) *ib.*

Hab. New South Wales; Queensland.

HIPPOPSINÆ.

ESSISUS.

Essisus, *Pascoe, antè*, p. 90.

ESSISUS DISPAR, *Pascoe, antè*, p. 91.

Hab. Queensland.

TMESISTERNINÆ.

ANASTETHA.

Anastetha, *Pascoe, Proc. Ent. Soc.* Sept. 1866.

ANASTETHA RARIPILA, *Pascoe, ib.*

Hab. Rockhampton.

TEMNOSTERNUS.

Temnosternus, *White, Cat. Long. Brit. Mus.* p. 335.

TEMNOSTERNUS PLANIUSCULUS, *White, ib.*, pl. 8. f. 6.

Hab. Queensland.

TEMNOSTERNUS DISSIMILIS, *Pascoe, Trans. Ent. Soc.* ser. 2. v. p. 59.

Hab. Queensland.

CERAMBYCIDÆ.

STENODERINÆ.

BIMIA.

Bimia, *White, Proc. Zool. Soc.* 1850, p. 13.

BIMIA BICOLOR, *White, ib.*, pl. 13. f. 2.

Hab. Queensland; New South Wales; Victoria; South Australia
Western Australia.

B. FEMORALIS, *W. Wilson Saunders, Trans. Ent. Soc. ser. 2. i. p. 32, pl. 4. f. 7.*

Hab. —?

ACIPTERA.

Akiptera, *W. W. Saunders, ib. p. 82.*

ACIPTERA SEMIFLAVA, *W. W. Saunders, ib. p. 83, pl. 4. f. 6.*

Hab. —?

A. WATERHOUSEI, *Pascoe, Journ. of Entom. ii. p. 239, pl. 11. f. 4.*

Hab. South Australia.

AGAPETE.

Agapete, *Newman, Zoologist, iii. p. 1017 (1845).*

AGAPETE CARISSIMA, *Newman, ib.; W. W. Saunders, Trans. Ent. Soc. ser. 2. i. p. 84, pl. 1. f. 2.*

Hab. Victoria; New South Wales; South Australia.

A. KREUSLERÆ, *Pascoe, Journ. of Entom. ii. p. 241.*

Hab. South Australia (Gawler).

A. VESTITA, *Pascoe, antè, p. 91.*

Hab. South Australia (Gawler).

EARINIS.

Earinis, *Pascoe, Journ. of Entom. ii. p. 240.*

EARINIS MIMULA, *Pascoe, ib. p. 241, pl. 11. f. 3.*

Hab. South Australia.

E. KREUSLERÆ, *Pascoe, antè, p. 91.*

Hab. South Australia.

EROSHEMA.

Eroschema, *Pascoe, Trans. Ent. Soc. ser. 2. v. p. 17.*

Octavia, *Thomson, Essai, &c. p. 146.*

EROSHEMA POWERI, *Pascoe, ib., pl. 2. f. 2.*

Hab. New South Wales; Victoria; South Australia; Western Australia.

E. ATRICOLLE, *Pascoe, Journ. of Entom. ii. p. 365.*

Hab. Western Australia.

CHAODALIS.

Chaodalis, *Pascoe, ib. p. 366.*

CHAODALIS MACLEAYI, *Pascoe, ib. p. 367, pl. 16. f. 1.*

Hab. New South Wales.

TROPIS.

Tropis, (*Newman*) *Pascoe, Tr. Ent. Soc. ser. 3. i. p. 568 (1863).*

Tropocalymma, *J. Thomson, Syst. Ceramb. p. 138 (1864).*

TROPIS OCUlifera. (*Rhagiomorpha oculifera, Newman, Ann. Nat. Hist. v. p. 21.*)

Hab. Tasmania.

T. DIMIDIATA, *Newman, Entom.* p. 34. (*Tropocalymma dimidiata*,
Thomson, Syst. Ceramb. p. 138.)
Hab. Queensland.

TRITOCOSMIA.

Tritocosmia, *Newman, Zoologist*, 1850, *App.* cxii.

TRITOCOSMIA ROEI. (*Stenoderus Roci*, *Hope, Trans. Ent. Soc.* ser. 1.
i. p. 17, pl. 2. f. 3.)

Hab. Western Australia; New South Wales.

T. ATRICILLA, *Newman, Zool.* 1850, cxv. Var. of *Roei*?

Hab. —?

T. DIGGLESII, *Pascoe, Trans. Ent. Soc.* ser. 2. v. p. 58.

Hab. Queensland.

T. RUBEA, *Pascoe, ib.* p. 24.

Hab. New South Wales.

T. PARADOXA, *Pascoe, ib.* p. 56.

Hab. Victoria; South Australia.

STENODERUS.

Stenoderus, *Serville, Ann. Soc. Ent. de France*, iv. p. 210.

Pterostenus, *Thomson, Essai*, &c. p. 149.

STENODERUS SUTURALIS. (*Stenocorus suturalis*, *Olivier, Entom.* iv.
no. 69, pl. 3. f. 24. *Cerambyx abbreviatus*, *Fabricius, Ent. Syst.*
ii. p. 275. *Leptura ceramboides*, *Kirby, Trans. Linn. Soc.* xii.
p. 472. *Stenoderus labiatus*, *Pascoe, Trans. Ent. Soc.* ser. 2. v. p. 24
(var.).)

Hab. Victoria; South Australia; New South Wales; Western Australia.

S. OSTRICILLA, *Newman, Zool.* 1850, cxiii.

Hab. Queensland.

S. MACULICORNIS, *W. W. Saunders, Trans. Ent. Soc.* ser. 2. i. p. 79,
pl. 4. f. 2.

Hab. North coast.

S. QUIETUS, *Newman, Trans. Ent. Soc.* ser. 2. iv. p. 53.

Hab. Queensland.

S. CONCOLOR, *Macleay, King's Voy.* p. 452.

Hab. Victoria.

SYLLITUS.

Syllitus, *Pascoe, Trans. Ent. Soc.* ser. 2. v. p. 24.

SYLLITUS GRAMMICUS. (*Stenoderus grammicus*, *Newman, Ann. Nat.*
Hist. v. p. 21. *Stenoderus rectus*, *Newman, Entom.* p. 95 (var.).)

Hab. South Australia; Victoria; New South Wales; Western Aus-
tralia.

S. PARRYI, *Pascoe, Journ. of Entom.* i. p. 366.

Hab. New South Wales?

S. DEUSTUS. (*Stenoderus deustus, Newman, Entom.* p. 95.)

Hab. —?

APHNEOPE.

Aphneope, Pascoe, Trans. Ent. Soc. ser. 3. i. p. 567.

APHNEOPE SERICATA, *Pascoe, ib.* p. 568, pl. 22. f. 1.

Hab. Port Curtis.

ZOËDIA.

Zoëdia, *Pascoe, Journ. of Entom.* i. p. 361.

ZOËDIA TRIANGULARIS, *Pascoe, ib.* p. 361, pl. 17. f. 3.

Hab. Victoria.

Z. DIVISA, *Pascoe, ib.* p. 362, pl. 17. f. 1.

Hab. Kangaroo Island; Victoria.

AMETROCEPHALA.

Ametrocephala, Blanchard, Gay, Hist. Fis. de Chili, v. p. 480.

Pseudocephalus, Newman, Entom. p. 553 (non *Burmeister*).

AMETROCEPHALA FORMICIDES. (*Pseudocephalus formicides, Newm.*
ib. p. 353.)

Hab. Victoria.

A. ARIETINA. (*Pseudocephalus arietinus, Newman, Zool.* 1851, *Suppl.*
cxxxvii.)

Hab. Tasmania.

A. MIRA, *Pascoe, Journ. of Ent.* ii. p. 367.

Hab. Western Australia.

TRICHEOPS.

Tricheops, Newman, Entom. Mag. v. p. 171.

TRICHEOPS EPHIPPIGER, *Newman, ib.* p. 171.

Hab. New South Wales.

MACRONES.

Macrones, Newman, Entom. p. 33.

MACRONES EXILIS, *Newman, ib.*; *W. W. Saunders, Trans. Ent. Soc.*
ser. 2. i. p. 78, pl. 1. f. 6.

Hab. Tasmania; South Australia.

M. RUFUS, *W. W. Saunders, ib.* p. 78, pl. 1. f. 8.

Hab. Hunter's River.

M. ACICULARIS, *Pascoe, Journ. of Entom.* i. p. 368.

Hab. South Australia.

M. CAPITO, *Pascoe, Trans. Ent. Soc.* ser. 3. i. p. 566.

Hab. New South Wales; Port Curtis.

ENCHOPTERA.

Enchoptera, *W. W. Saunders, Trans. Ent. Soc. ser. 2. i. p. 76.*

ENCHOPTERA APICALIS, *W. W. Saunders, ib. p. 77, pl. 1. f. 7.*
Hab. Tasmania.

E. NIGRICORNIS, *W. W. Saunders, ib. p. 77, pl. 1. f. 5.*
Hab. New South Wales.

PSILOMORPHA.

Psilomorpha, *W. W. Saunders, ib. p. 80.*

PSILOMORPHA TENUIPES, *W. W. Saunders, ib. p. 81, pl. 4. f. 1.*
Hab. —?

P. APICALIS, *Pascoe, Trans. Ent. Soc. ser. 2. v. p. 58.*
Hab. Queensland.

P. LUSORIA, *Pascoe, Journ. of Entom. ii. p. 367. (? Stenoderus pulcher, Hope, Trans. Ent. Soc. ser. 1. i. p. 18.)*
Hab. Queensland.

ORODERES.

Oroderes, *W. W. Saunders, Trans. Ent. Soc. ser. 2. i. p. 81.*

ORODERES HUMERALIS, *W. W. Saunders, ib. p. 81, pl. 1. f. 3.*
Hab. New South Wales; North Australia.

BRACHOPSIS.

Brachopsis, *W. W. Saunders, ib. p. 97.*

BRACHOPSIS CONCOLOR, *W. W. Saunders, ib. p. 97, pl. 1. f. 4.*
Hab. Tasmania.

B. NUPERA, *Pascoe, Trans. Ent. Soc. ser. 3. i. p. 565.*
Hab. New South Wales.

STEPHANOPS.

Stephanops, *Shuckard, Entom. Mag. v. p. 509.*

Rhinophthalmus, *Thomson, Essai, &c. p. 152.*

STEPHANOPS NASUTUS, *Shuckard, Entom. Mag. v. p. 510. (Macrones elongaticeps, Blanchard, Voy. au Pôle Sud, pl. 16. fig. 8.)*
Hab. Tasmania; Victoria; South Australia; New South Wales; Queensland.

RHAGIOMORPHA.

Rhagiomorpha, *Newman, Ann. Nat. Hist. v. p. 21.*

Physodroma, *Thomson, Essai, &c. p. 150.*

RHAGIOMORPHA LEPTUROIDES. (*Stenocorus lepturoides, Boisduval, Voy. de l'Astrol. p. 479. Physodroma sexcostata, Thomson, Essai, &c. p. 150.*)

Hab. New South Wales.

TESSAROMMA.

Tessaromma, *Newman, Ann. Nat. Hist.* v. p. 20.

Meropachys, (*Macleay*) *Hope, Trans. Zool. Soc.* i. p. 197.

TESSAROMMA UNDATUM, *Newman, l. c.* (Meropachys *Macleayi*, *Hope, l. c.* Meropachys *tristis*, var. *ej. ib.* Callidium *fulvomaculatum*, *Blanch. Voy. au Pôle Sud.*)

Hab. South Australia; Victoria; New South Wales.

PHLYCTÆNODES.

Phlyctænodes, *Newman, Ann. Nat. Hist.* v. p. 20.

Trachelorachys, *Hope, Trans. Zool. Soc.* iii. p. 196.

Demacidia, *Thomson, Essai, &c.* p. 246.

PHLYCTÆNODES PUSTULOSUS, *Newman, l. c.* p. 20. (Trachelorachys *fumicolor*, *Hope, l. c.* p. 196. Demacidia *brunnea*, *Thomson, l. c.* p. 246.)

Hab. Tasmania.

P. PUSTULATUS. (Trachelorachys *pustulata*, *Hope, l. c.* p. 196.)

Hab. New South Wales.

P. PILOSUS, *Pascoe, Journ. of Entom.* ii. p. 234.

Hab. South Australia.

DIOTIMA.

Diotima, *Pascoe, Trans. Ent. Soc.* ser. 2. v. p. 57.

DIOTIMA UNdulata, *Pascoe, ib.* p. 58, pl. 2. f. 9.

Hab. Queensland; New South Wales.

APOSITES.

Aposites, *Pascoe, Journ. of Entom.* ii. p. 363.

APOSITES MACILENTUS, *Pascoe, ib.* p. 364, pl. 16. f. 6.

Hab. South Australia (Gawler).

A. PUBICOLLIS, *Pascoe, antè*, p. 92.

Hab. Western Australia.

BARDISTUS.

Bardistus, *Newman, Entom.* p. 80.

BARDISTUS CIBARIUS, *Newman, ib.* p. 80.

Hab. Western Australia.

NEOSTENUS.

Neostenus, *Pascoe, Trans. Ent. Soc.* ser. 2. iv. p. 91.

Lysestia (♀), *Pascoe, Journ. of Entom.* ii. p. 364.

NEOSTENUS SAUNDERSII, *Pascoe, Trans. Ent. Soc.* ser. 2. iv. p. 91, pl. 22. f. 2. (Lysestia *rotundicollis*, *Pascoe, Journ. of Entom.* ii. p. 365.)

Hab. Victoria; South Australia.

N. MORIO. (*Lysestia morio*, *Pascoe, Journ. of Entom.* ii. p. 365.)
Hab. Western Australia.

MYSTROSA.

Mystrosa, *Pascoe, Journ. of Entom.* ii. p. 239.

MYSTROSA RUBIGINEA, *Pascoe, ib.*, pl. 11. f. 2.
Hab. South Australia.

URACANTHINÆ.

SCOLECOBROTUS.

Scolecobrotus, *Hope, Trans. Zool. Soc.* i. p. 109.

SCOLECOBROTUS WESTWOODII, *Hope, ib.*, pl. 15. f. 5.
Hab. South Australia; Western Australia.

URACANTHUS.

Uracanthus, *Hope, ib.* p. 108.

URACANTHUS TRIANGULARIS, *Hope, ib.*, pl. 15. f. 4. (*Uracanthus angustatus*, *Laporte, Hist. Nat. Ins.* ii. p. 425.)
Hab. Victoria; South Australia.

U. SIMULANS, *Pascoe, antè*, p. 92.
Hab. South Australia.

U. MARGINELLUS, *Hope, Trans. Zool. Soc.* iii. p. 198.
Hab. Western Australia.

U. BIVITTA, *Newman, Entom. Mag.* v. p. 172.
Hab. New South Wales; Queensland.

U. PALLENS, *Hope, Trans. Zool. Soc.* iii. p. 198.
Hab. Tasmania.

U. FUSCO-CINEREUS, *White, Cat. Long. Brit. Mus.* p. 330.
Hab. New South Wales.

U. MINIATUS, *Pascoe, antè*, p. 93.
Hab. Western Australia.

ÆTHIORA.

Æthiora, *Pascoe, Journ. of Entom.* ii. p. 369.

ÆTHIORA FULIGINEA. (*Uracanthus fuliginus*, *Pascoe, ib.* p. 238.)
Hab. South Australia.

TRICHOMESIA.

Trichomesia, *Pascoe, Trans. Ent. Soc.* ser. 2. v. p. 18.

TRICHOMESIA NEWMANII, *Pascoe, ib.* p. 18.
Hab. New South Wales; Victoria; South Australia.

DISTICHOCERINÆ.

DISTICHOCERA.

Distichocera, Kirby, *Trans. Linn. Soc.* xii. p. 471.

DISTICHOCERA MACULICOLLIS, Kirby, *ib.* t. 28. f. 10. (*D. rubripennis*, MacLeay, ♀. *D. ferruginea*, Guérin, ♀. *D. fulvipennis*, Newman, ♀.)
Hab. New South Wales; Victoria.

D. MUTATOR, Pascoe, *Journ. of Entom.* i. p. 370.
Hab. Queensland.

D. PAR, Newman, *Proc. Zool. Soc.* 1851, p. 78. (*Distichocerus fuliginosus*, Blanchard, *Croch. Règne Animal*, pl. 66. f. 4.)
Hab. Victoria; South Australia.

D. THOMSONELLA, White, *Proc. Zool. Soc.* 1859, p. 122, pl. 58. f. 6.
Hab. Victoria; New South Wales; North Australia; South Australia.

D. KIRBYI, Newman, *ib.* 1851, p. 79, pl. 20.
Hab. New South Wales.

D. MACLEAYI, Newman, *ib.* 1851, p. 81.
Hab. New South Wales; Victoria; South Australia.

TRAGOCERINÆ.

TRAGOCERUS.

Tragocerus, Serville, *Ann. Soc. Ent. de France*, iii. p. 60.

TRAGOCERUS BIDENTATUS. (*Prionus bidentatus*, Donovan, *Ins. New Holl.* f. *Tragocerus australis*, Serville, *Ann. Soc. Ent. de France*, iii. p. 61.)
Hab. New South Wales; Victoria.

T. FASCIATUS. (*Prionus fasciatus*, Donovan, *Ins. New Holl.* f. *Tragocerus australis*, Boisduval, *Voy. de l'Astrol.* p. 465, pl. 8. f. 6. *T. bifasciatus*, Guér. *Voy. de la Coq.* pl. 7. f. 3.)
Hab. New South Wales; Victoria.

T. SUBFASCIATUS, Germar, *Linn. Ent.* iii. p. 224.
Hab. South Australia; Victoria.

T. SPENCEI, Hope, *Trans. Ent. Soc.* i. p. 18, pl. 2. f. 4.
Hab. Victoria; New South Wales; South Australia.

T. FORMOSUS, Pascoe, *Ann. & Mag. Nat. Hist.* ser. 3. ix. p. 463.
Hab. Lizard Island.

T. LEPIDOPTERUS. (*Prionus lepidopterus*, Schrebers, *Trans. Linn. Soc.* vi. p. 197, t. 21. f. 7.)
Hab. New South Wales.

PYTHEINÆ.

TELOCERA.

Telocera, *White, Ann. & Mag. Nat. Hist.* ser. 3. ii. p. 354.

TELOCERA WOLLASTONI, *White, ib.* p. 355.

Hab. Queensland.

PYTHEUS.

Pytheus, *Newman, Entom.* p. 14.

PYTHEUS JUGOSUS, *Newman, ib.* p. 14.

Hab. New South Wales.

P. LATEBROSUS, *Newman, ib.* p. 95.

Hab. Kangaroo Island; South Australia; New South Wales.

P. PULCHERRIMUS. (*Brachytria pulcherrima, Pascoe, Trans. Ent. Soc.* ser. 2. v. p. 28.)

Hab. Queensland; South Australia.

BRACHYTRIA.

Brachytria, *Newman, Ann. & Mag. Nat. Hist.* v. p. 16.

BRACHYTRIA GULOSA, *Newman, ib.* p. 16; *W. Wilson Saunders, Trans. Ent. Soc.* ser. 2. i. pl. 4. f. 3. (*Callidiomorphus depressus, Blanchard, Voy. au Pôle Sud*, pl. 17. f. 3.)

Hab. Tasmania; Victoria; New South Wales; South Australia; Queensland.

B. CENTRALIS, *Pascoe, Trans. Ent. Soc.* ser. 3. i. p. 564.

Hab. South Australia.

OMOPHCENA.

Omophœna, *Pascoe, Journ. of Entom.* ii. p. 230.

OMOPHCENA KREUSLERÆ, *Pascoe, ib.* p. 231, pl. 11. f. 8.

Hab. South Australia.

O. TÆNIATA, *Pascoe, antè*, p. 93.

Hab. —?

EBUROPHORA.

Eburophora, *White, Cat. Long. Brit. Mus.* p. 332.

EBUROPHORA OCTOGUTTATA, *White, ib.*, pl. 8. f. 7.

Hab. Victoria.

PEMPSAMACRA.

Pempsamacra, *Newman, Entom. Mag.* v. p. 495.

PEMPSAMACRA DISPERSA, *Newman, ib.* p. 495. (*Callidium fulvo-maculatum, Blanchard, Voy. au Pôle Sud*, iv. p. 273, t. 16. f. 8.)

Hab. Victoria; South Australia; New South Wales; Queensland.

P. TILLIDES, *Newman, ib.* p. 496.

Hab. New South Wales.

P. VESTITA, *Pascoe, Trans. Ent. Soc.* ser. 2. v. p. 57.

Hab. Victoria.

P. SUBAUREA, *Pascoe, ib.* ser. 3. i. p. 564.

Hab. New South Wales.

P. PYGMÆA, *Newman, Zool.* 1851, cxxviii. (*Lepidisia bimaculata*, *White, Cat. Long. Brit. Mus.* p. 333, pl. 8. f. 9.)

Hab. Victoria; New South Wales; Queensland.

HESTHESINÆ.

HESTHESIS.

Hesthesis, *Newman, Ann. Nat. Hist.* v. p. 17.

HESTHESIS FERRUGINEUS. (*Molorchus ferrugineus*, *Boisduval, Voy. de l'Astrol.* p. 487.)

Hab. New South Wales; Queensland.

H. CINGULATUS. (*Molorchus cingulatus*, *Kirby, Trans. Linn. Soc.* xii. p. 472.)

Hab. Victoria; New South Wales; South Australia.

H. MÆRENS, *Pascoe, Trans. Ent. Soc.* ser. 2. v. p. 21.

Hab. New South Wales.

H. MURINUS, *Pascoe, ib.* ser. 3. i. p. 555.

Hab. New South Wales; Western Australia.

H. FLORATOR, *Pascoe, Journ. of Entom.* i. p. 369.

Hab. Victoria.

H. VARIEGATUS. (*Leptura variegata*, *Fabricius, Mant. Ins.* i. p. 108. *Molorchus variegatus*, *Fabricius, Ent. Syst.* ii. p. 357.)

Hab. New South Wales.

H. ORNATUS, *W. Wilson Saunders, Trans. Ent. Soc.* ser. 2. i. p. 84, pl. 1. f. 1.

Hab. New South Wales.

H. BIZONATUS, *Newman, Ann. Nat. Hist.* v. p. 17.

Hab. —?

H. VESPARIUS, *Pascoe, Trans. Ent. Soc.* ser. 3. i. p. 557.

Hab. —?

H. VIGILANS, *Pascoe, ib.* p. 556.

Hab. Victoria; New South Wales.

H. ACUTIPENNIS, *Pascoe, ib.* p. 556.

Hab. New South Wales.

H. ANGUSTATUS, *Pascoe, ib.* p. 554.

Hab. Western Australia.

OBRINIÆ.

IGENIA.

Igenia, *Pascoe, antè*, p. 95.

IGENIA IBIDIONOIDES. (*Obrium ibidionoides*, *Pascoe, Trans. Ent. Soc. ser. 2. v. p. 26.*)

Hab. New South Wales.

I. STIGMOSA, *Pascoe, antè*, p. 95.

Hab. South Australia.

I. DORSALIS. (*Obrium dorsale*, *Pascoe, Journ. of Entom. ii. p. 237.*)

Hab. South Australia.

SIDIS.

Sidis, *Pascoe, antè*, p. 93.

SIDIS OPILOIDES, *Pascoe, antè*, 94.

Hab. South Australia (Gawler).

ACYRUSA.

Acyrusa, *Pascoe, antè*, p. 94.

ACYRUSA CILIATA. (*Obrium ciliatum*, *Pascoe, Trans. Ent. Soc. ser. 3. i. p. 559.*)

Hab. New South Wales.

PHALOTA.

Phalota, *Pascoe, Trans. Ent. Soc. ser. 3. i. p. 559.*

PHALOTA TENELLA, *Pascoe, ib.* p. 560.

Hab. Port Curtis.

P. COLLARIS, *Pascoe, antè*, p. 96.

Hab. South Australia (Gawler).

XYSTENA.

Xystena, *Pascoe, antè*, p. 96.

XYSTENA VITTATA, *Pascoe, antè*, p. 97.

Hab. Queensland.

SISYRIUM.

Sisyrium, *Pascoe, antè*, p. 95.

SISYRIUM TRIPARTITUM. (*Obrium tripartitum*, *Pascoe, Journ. of Entom. ii. p. 238.*)

Hab. South Australia.

MECYNOPUS.

Mecynopus, *Erichson, Wiegmann's Archiv*, 1842, p. 222.

MECYNOPUS COTHURNATUS, *Erichson, ib.*, t. 4. f. 10.

Hab. Tasmania.

M. SEMIVITREUS, *Pascoe, Trans. Ent. Soc.* ser. 2. v. p. 56.
Hab. Victoria.

OMOTES.

Omotes, *Newman, Entom.* p. 353.

OMOTES CUCUJIDES, *Newman, ib.*
Hab. Victoria.

O. PUNCTISSIMA, *Newman, Zool.* 1851, cxxix.
Hab. South Australia.

C. EROSICOLLIS, *Pascoe, Trans. Ent. Soc.* ser. 2. v. p. 57.
Hab. Victoria.

CERAMBYCINÆ.

BETHELIUM.

Bethelium, *Pascoe, antè*, p. 97.

BETHELIUM SIGNIFERUM. (*Callidium signiferum*, *Newman, Entom.*
 p. 10.)
Hab. Tasmania.

B. INSCRIPTUM. (*Callidium inscriptum*, *Pascoe, Journ. of Entom.* i.
 p. 363.)
Hab. Queensland.

ELETE.

Elete, *Pascoe, Trans. Ent. Soc.* ser. 3. i. p. 553.

ELETE INSCRIPTA, *Pascoe, ib.* p. 554, pl. 22. f. 2.
Hab. New South Wales.

SCELETODES.

Skeletodes, *Newman, Zool.* 1850, cxiii.

SCELETODES TETROPS, *Newman, ib.*
Hab. —?

AMPHIROË.

Amphiroë, *Newman, Entom.* p. 24.

AMPHIROË DECORA, *Newman, ib.*
Hab. Queensland; Tasmania; South Australia.

CALLIDIOPSIS.

Callidiopsis, *J. Thomson, Syst. Ceramb.* p. 237.

CALLIDIOPSIS SCUTELLARIS. (*Callidium scutellare*, *Fabricius, Syst.*
El. ii. p. 338. *C. piceum*, *Newman, Entom.* p. 9.)
Hab. Victoria; Tasmania.

C. PRÆCOX. (*Stenocorus præcox*, *Erichson, Wiegmann's Arch.* 1842,
 p. 220.)
Hab. Tasmania.

ATESTA.

Atesta, *Pascoe, antè*, p. 99.

ATESTA BIFASCIATA. (Phoracantha bifasciata, *Pascoe, Trans. Ent. Soc. ser. 3. i. p. 552.*)

Hab. Port Curtis.

A. BALTEATA. (Phoracantha balteata, *Pascoe, Journ. of Entom. ii. p. 233.*)

Hab. South Australia.

A. ANGASII. (Phoracantha Angasii, *Pascoe, ib. p. 233.*)

Hab. South Australia.

ALLOTISIS.

Allotisis, *Pascoe, antè*, p. 99.

ALLOTISIS UNIFASCIATA. (Coptocercus unifasciatus, *Hope, Trans. Zool. Soc. iii. p. 195, pl. 12. f. 6.*)

Hab. Western Australia.

A. SCITULA, *Pascoe, Trans. Ent. Soc. ser. 3. i. p. 551.*

Hab. Port Denison.

A. DISCRETA, *Pascoe, ib. p. 551.*

Hab. New South Wales.

EPITHORA.

Epithora, *Pascoe, antè*, p. 98.

EPITHORA DORSALIS. (Stenochorus dorsalis, *Macleay, App. King's Voyage, ii. p. 451. S. uniguttatus, Hope, Trans. Zool. Soc. iii. p. 193. S. rhombifer, Hope, ib. p. 194. Malloecera elongata, Laporte, Hist. Nat. des An. Art. ii. p. 424. ?Stenochorus angustatus, Boisduval.*)

Hab. Victoria; New South Wales.

CALLIRHOË.

Callirhoë, *Newman, Entom. p. 3.*

CALLIRHOË BIGUTTATA. (Stenocorus biguttatus, *Donovan, Ins. New Holl. Coptocercus biguttatus, Hope, Trans. Zool. Soc. iii. p. 195, pl. 12. f. 7.*)

Hab. Victoria; New South Wales; Queensland.

C. ALLAPSA. (Phoracantha allapsa, *Newman, Entom. p. 4; Blanchard, Voy. au Pôle Sud, pl. 16. f. 3. Stenochorus Roei, Hope, Trans. Zool. Soc. iii. p. 194. S. rubripes, Boisduval, Voy. de l'Astrol. p. 447.*)

Hab. Tasmania; South Australia; Victoria; Western Australia; New South Wales; Queensland.

C. ABERRANS. (Phoracantha aberrans, *Newman, Entom. p. 4.*)

Hab. New South Wales; Queensland.

C. POLITA. (Phoracantha polita, *Pascoe, Trans. Ent. Soc. ser. 3. i. p. 550.*)

Hab. New South Wales.

C. PEDATOR. (*Phoracantha pedator*, *Pascoe, Journ. of Entom.* ii. p. 232.)
Hab. South Australia.

C. PUBESCENS. (*Phoracantha pubescens*, *Pascoe, Trans. Ent. Soc.*
 ser. 3. i. p. 550.)
Hab. Port Curtis.

PHORACANTHA.

Phoracantha, *Newman, Ann. & Mag. Nat. Hist.* v. p. 19.

Stenochorus, *Hope, Trans. Zool. Soc.* iii. p. 190.

Stenocorus, *Fabricius* (in pt.), *Syst. Entom.* p. 178 (1775) non *Geoffroy*
 (1762).

PHORACANTHA SEMIPUNCTATA. (*Stenocorus semipunctatus*, *Fabri-*
cus, Syst. Entom. p. 180. *Cerambyx semipunctatus*, *Olivier, Ins.*
 no. 67. p. 38, no. 69. pl. 2. f. 19. *Stenocorus inscriptus*, *Germar,*
Lin. Entom. iii. p. 226.)

Hab. Victoria; New South Wales; South Australia; Western Australia.

P. RECURVA, *Newman, Entom.* p. 4. (*Stenochorus semipunctatus*, *Bois-*
duval, Voy. de l'Astrol. p. 476.)

Hab. South Australia; Victoria; New South Wales.

P. PUNCTATA. (*Stenocorus punctatus*, *Kirby, Trans. Linn. Soc.* xii.
 p. 470.)

Hab. New South Wales; South Australia; Western Australia.

P. LONGIPENNIS. (*Stenochorus longipennis*, *Hope, Trans. Zool. Soc.*
 iii. p. 190.)

Hab. Tasmania.

P. TRICUSPIS, *Newman, Entom.* p. 3. (*Stenocorus robustus*, *Germar,*
Lin. Entom. iii. p. 225. ? *P. impavida*, *Newman, Zool.* 1850, cxiv.)

Hab. New South Wales; South Australia; Victoria.

P. GIGAS, *Hope, ib.* pl. 12. f. 5.

Hab. ? Western Australia.

P. QUINARIA, *Newman, Entom.* p. 3.

Hab. South Australia; Victoria.

P. FALLAX, *Pascoe, Trans. Ent. Soc.* ser. 3. i. p. 549.

Hab. New South Wales; South Australia; Western Australia.

P. FLAVO-PICTA, *Pascoe, Journ. of Entom.* ii. p. 371.

Hab. South Australia.

P. TRIMACULATA. (*Stenochorus trimaculatus*, *Hope, Trans. Zool. Soc.*
 iii. p. 191, pl. 12. f. 9.)

Hab. Western Australia.

P. HOSPITA, *Pascoe, l. c.* p. 232.

Hab. Queensland.

P. SENIO, *Newman, Entom.* p. 4.

Hab. Victoria; South Australia; New South Wales.

DIOSPIDES.

Diospides, *Pascoe, antè*, p. 99.

DIOSPIDES OBSCURA. (*Stenocorus obscurus, Donovan, Ins. New Holl.*)
Hab. New South Wales; Queensland.

TRYPHOCHARIA.

Tryphocaria, *Pascoe, antè*, p. 99.

TRYPHOCHARIA HAMATA. (*Phoracantha hamata, Newman, Entom.*
p. 3.)

Hab. New South Wales; Victoria.

T. SUPERANS. (*Phoracantha superans, Pascoe, Journ. of Entom. i.*
p. 357.)

Hab. Tasmania.

T. MITCHELLI. (*Stenochorus Mitchelli, Hope, Trans. Zool. Soc. iii. p.*
191, pl. 12. f. 8.)

Hab. Western Australia.

T. ODEWAHNII. (*Phoracantha Odewahnii, Pascoe, Journ. of Entom.*
ii. p. 231.)

Hab. South Australia.

XYPETA.

Xypeta, *Pascoe, antè*, p. 100.

XYPETA GRALLARIA. (*Phoracantha grallaria, Pascoe, l. c. ii. p. 231.*)

Hab. Queensland.

ÆSIOTYCHE.

Æsiotyche, *Pascoe, ib.* p. 370.

ÆSIOTYCHE FAVOSA, *Pascoe, ib.*, pl. 16. f. 3.

Hab. South Australia (Gawler).

CERAMBYX.

Cerambyx, *Linnæus, Syst. Nat. ed. 12. t. i. pt. 11. p. 261.*

Hammaticherus, Dejean; non Hamaticherus, Serville.

Pachydissus, Newman, Ent. Mag. v. p. 494.

CERAMBYX SERICUS. (*Pachydissus sericus, Newman, ib. v. p. 494.*

Hammaticherus turbinaticornis, Germar, Lin. Ent. iii. p. 224.)

Hab. Victoria; South Australia; New South Wales; Western Australia.

C. PICIPENNIS. (*Hammaticherus picipennis, Germar, ib. p. 225.*)

Hab. South Australia.

C. NUBILUS, *Pascoe, Trans. Ent. Soc. ser. 3. i. p. 558.*

Hab. Queensland.

DIDYMOCANTHA.

Didymocantha, *Newman, Ann. Nat. Hist. v. p. 20.*

DIDYMOCANTHA OBLIQUA, *Newman, ib.* p. 20. (*Strongylurus vari-*
cornis, Hope, Trans. Zool. Soc. iii. p. 199.)

Hab. New South Wales; Queensland.

D. BREVICOLLIS, *Pascoe, antè,* p. 100.

Hab. Western Australia.

STRONGYLURUS.

Strongylurus, Hope, l.c. p. 199 (in pt.).

Isalium, Pascoe, Trans. Ent. Soc. ser. 3. i. p. 549.

STRONGYLURUS SCUTELLATUS, *Hope, Proc. Zool. Soc.* 1840, p. 54;
Trans. Zool. Soc. iii. p. 199, pl. 12. f. 2.

Hab. Victoria.

S. CRETIFER. (*Coptopterus cretifer, Hope, Trans. Zool. Soc.* iii. p. 200,
pl. 12. f. 3. *Isalium Odewahnii, Pascoe, Journ. of Entom.* ii. p. 235,
var.)

Hab. South Australia; Western Australia.

S. THORACICUS. (*Didymocantha thoracica, Pascoe, Trans. Ent. Soc.*
ser. 2. iv. p. 98.

Hab. Queensland; New South Wales.

OXYMAGIS.

Oxymagis, Pascoe, antè, p. 101.

OXYMAGIS GRAYII, *Pascoe, ib.*

Hab. —?

EXÆRETA.

Exæreta, Pascoe, Journ. of Entom. ii. p. 368.

EXÆRETA UNICOLOR, *Pascoe, ib.* p. 369, pl. 16. f. 2.

Hab. South Australia (Gawler).

LYGESIS.

Lygesis, Pascoe, ib. p. 369.

LYGESIS CYLINDRICOLLIS. (*Didymocantha cylindricollis, Pascoe,*
Trans. Ent. Soc. ser. 2. v. p. 18.)

Hab. Queensland.

BEBIUS.

Bebius, Pascoe, Journ. of Entom. ii. p. 369.

BEBIUS FILIFORMIS, *Pascoe, ib.* p. 370.

Hab. South Australia.

PETALODES.

Petalodes, Newman, Entom. p. 9.

PETALODES LAMINATUS, *Newman, ib.* p. 9.

Hab. South Australia; Victoria.

P. PLAGIATUS, *White, Ann. & Mag. Nat. Hist.* ser. 3. ii. p. 354, note.
Hab. ? South Australia.

OPSIDOTA.

Opsidota, *Pascoe, Journ. of Entom.* ii. p. 235.

OPSIDOTA INFECTA, *Pascoe, ib.* p. 236, pl. 11. f. 6.
Hab. South Australia.

O. ALBIPILOSA, *Pascoe, antè*, p. 101.
Hab. South Australia.

PIESARTHRIUS.

Piesarthrius, *Hope, Trans. Zool. Soc.* iii. p. 200.

PIESARTHRIUS MARGINELLUS, *Hope, ib.* iii. p. 200, pl. 12. f. 1.
Hab. Western Australia; Victoria.

CERESIUM.

Ceresium, *Newman, Entom.* p. 322.

Diatomocephala, *Blanchard, Voy. au Pôle Sud*, iv. p. 266.

CERESIUM SIMPLEX. (*Stenochorus simplex*, *Gyllenhall, in Schön. Syst. Ins. App.* i. 3. p. 178. *Callidium vile*, *Newman, Entom.* p. 223. *Cemonia Philippensis*, *Newman, ib.* p. 247, fide *White*. *Arhopalus ambiguus*, *Newman, ib.* p. 246, fide *White*. *Diatomocephala maculaticollis*, *Blanchard, Voy. au Pôle Sud*, iv. p. 267, pl. 16. f. 9. *D. simplex*, *White, Cat. Long. Brit. Mus.* p. 305.)

Hab. —? (Generally distributed from Burmah to the Philippine Islands; perhaps questionable as from Australia.)

PAPHORA.

Paphora, *Pascoe, antè*, p. 102.

PAPHORA MODESTA. (*Ceresium? modestum*, *Pascoe, Journ. of Entom.* ii. p. 237.)

Hab. South Australia.

PORITHEA.

Porithea, *Pascoe, antè*, p. 102.

PORITHEA INTORTA. (*Callidium intortum*, *Newman, Entom.* p. 223.)
Hab. —?

APHANASIUM.

Aphanasium, *Thomson, Essai, &c.* p. 300.

Solimnia, *Pascoe, Trans. Ent. Soc.* ser. 3. i. p. 557.

APHANASIUM AUSTRALE. (*Callidium Australe*, *Boisduval, Voy. de l'Astrol.* ii. p. 480; *Thomson, Essai, &c.* p. 300. *Solimnia sublineata*, *Pascoe, Trans. Ent. Soc.* ser. 3. i. p. 558, pl. 22. f. 3.)

Hab. South Australia; New South Wales.

TAPHOS.

Taphos, *Pascoe, Journ. of Entom.* ii. p. 236.

TAPHOS ATERRIMUS, *Pascoe, ib.* pl. 11. f. 7.

Hab. South Australia.

IBIDIONINÆ.

ISCHNOTES.

Ischnotes, *Newman, Ann. Nat. Hist.* v. p. 18.

ISCHNOTES CYLINDRACEUS, *Newman, ib.* p. 18.

Hab. South Australia.

I. BAKEWELLII, *Pascoe, Trans. Ent. Soc.* ser. 2. v. p. 56.

Hab. Victoria.

CLY TINÆ.

CLYTANTHUS.

Clytanthus, *Thomson, Syst. Ceramb.* p. 190.

Anthoboscus, Chevrolat (non Guérin).

CLYTANTHUS CURTISII. (*Clytus Curtisii, Laporte et Gory, Mon. du Genre Clytus*, p. 49, pl. 10. f. 56 bis.)

Hab. Queensland.

C. GLAUCINUS. (*Clytus glaucinus, Boisduval, Voy. de l'Astro.* ii. p. 483. *Laporte et Gory, Mon. Genre Clytus*, p. 98, pl. 18. f. 117.)

Hab. —?

C. CHRYSODERES. (*Clytus chrysoderes, White, Cat. Long. Brit. Mus.* p. 285.)

Hab. Queensland.

C. ANNULARIS. (*Callidium annulare, Fabricius, Mant. Ins.* i. p. 156; *Ent. Syst.* ii. p. 337; *Olivier, Entom.* iv. no. 70. p. 48, pl. 6. f. 74.)

Hab. "Port Jakson," fide *Boisduval*.

XYLOTRECHUS.

Xylotrechus, *Chevrolat, Ann. Soc. Ent. de France*, 1860, p. 456.

XYLOTRECHUS AUSTRALIS. (*Clytus Australis, Laporte et Gory, Mon. du Genre Clytus*, p. 99, pl. 19. f. 118.)

Hab. Queensland.

CREMYS.

Cremys, *Pascoe, Journ. of Entom.* ii. p. 246.

CREMYS DIOPHTHALMUS. (*Clytus diopthalmus, Pascoe, ib.* i. p. 358.)

Hab. Queensland.

ARIDÆUS.

Aridæus, *Thomson, Essai, &c.* p. 228.

ARIDÆUS THORACICUS. (*Clytus thoracicus*, *Donovan, Ins. of New Holl.; Laporte et Gory, Mon. du Genre Clytus*, p. 50, pl. 10. f. 58.)
Hab. New South Wales; Queensland.

A. HEROS, *Pascoe, antè*, p. 103.

Hab. Port Albany.

TYPHOCESES.

Typhocesis, *Pascoe, Trans. Ent. Soc. ser. 3. i.* p. 561.

TYPHOCESES MACLEAYI, *Pascoe, ib.* p. 562, pl. 23. f. 4.

Hab. Port Denison; Rockhampton.

HEMISTHOCERA.

Hemisthocera, *Newman, Zool.* 1850, cxi.

HEMISTHOCERA FLAVILINEA, *Newman, ib.*; *White, Cat. Long. B. M.*
 pl. 6. f. 2.

Hab. Northern Australia.

OBRIIDA.

Obrida, (*White*) *Pascoe, Journ. of Entom.* ii. p. 360 (note).

OBRIDA FASCIALIS. (*Clytus* (*Obrida*) *fascialis*, *White, Stoke's Discov. in Australia*, i. p. 510, pl. 2. f. 4.)

Hab. Victoria; New South Wales.

O. COMATA, *Pascoe, Journ. of Entom.* ii. p. 50.

Hab. Queensland.

HOMÆMOTA.

Homæmota, *Pascoe, ib.* p. 371.

HOMÆMOTA BASALIS, *Pascoe, ib.* p. 372.

Hab. Western Australia (Perth).

H. DUBOULAYI, *Pascoe, antè*, p. 103.

Hab. Western Australia.

TILLOMORPHA.

Tillomorpha, *Blanchard, in Gay, Hist. Fis. de Chili*, v. p. 482.

TILLOMORPHA MÆSTULA, *White, Cat. Long. Brit. Mus.* p. 290.

Hab. Queensland.

ECTOSTICTA.

Ectosticta, *Pascoe, antè*, p. 104.

ECTOSTICTA CLEROIDES. (*Callidium cleroides*, *White, Cat. Long. Brit. Mus.* p. 322. *C. simillimum*, *White, ib.* [var.?.])

Hab. Victoria; Western Australia; South Australia.

E. RUIDA, *Pascoe, antè*, p. 104.

Hab. Champion Bay.

E. EBURATA. (*Callidium eburatum*, *Pascoe, Trans. Ent. Soc.* ser. 3. i. p. 563.)

Hab. New South Wales?

IPOMORIA.

Ipomoria, *Pascoe, antè*, p. 104.

IPOMORIA TILLIDES, *Pascoe, antè*, p. 105.

Hab. South Australia.

ADRIUM.

Adrium, *Pascoe, antè*, p. 105.

ADRIUM CATOXANTHUM. (*Callidium catoxanthum*, *White, Cat. Long. Brit. Mus.* p. 323.)

Hab. —?

A. ARTIFEX. (*Callidium artifex*, *Newman, Entom.* p. 353. *C. terebrans*, *Newman, ib.* [var. ?]. *C. cucujus*, *White, l.c.* p. 323.)

Hab. South Australia; Victoria.

SOPHRON.

Sophron, *Newman, Entom.* p. 354.

Clæadne, *Pascoe, Trans. Ent. Soc.* ser. 3. i. p. 560.

SOPHRON INORNATUS, *Newman, l.c.* p. 354. (*Clæadne melanaria*, *Pascoe, l.c.* p. 561, pl. 23. f. 5.)

Hab. New South Wales; South Australia; Victoria.

S. EBURATUS, *Pascoe, Journ. of Entom.* ii. p. 374.

Hab. South Australia.

CERASPHORINÆ.

PHACODES.

Phacodes, *Newman, Entom.* p. 7.

PHACODES OBSCURUS. (*Callidium obscurum*, *Fabricius, Ent. Syst.* i. pt. 11. p. 318; *Olivier, Coléopt.* iv. no. 70, pl. 4. f. 45. *Phacodes lentiginosus*, *Newman, l.c.* p. 7.)

Hab. Tasmania; New South Wales; Western Australia.

P. ESSINGTONI. (*Callidium Essingtoni*, *Hope, Ann. & Mag. Nat. Hist.* 1842, ix. p. 429.)

Hab. Port Essington.

P. PERSONATUS, *Erichson, Wiegmann's Arch.* 1842, p. 221.

Hab. Tasmania; New South Wales.

P. FERRUGINEUS, *Pascoe, Journ. of Entom.* ii. p. 238.

Hab. South Australia.

P. MOSSMANI, *Newman, Zool.* 1850, *App.* cxxiv.

Hab. South Australia.

P. ELUSUS, *Pascoe, Journ. of Entom.* ii. p. 373.

Hab. South Australia.

P. FUSCUS, *Pascoe, ib.* p. 373.

Hab. South Australia.

P. DISTINCTUS, *Pascoe, ib.* p. 373.

Hab. South Australia.

Thersalus.

Thersalus, *Pascoe, ib.* p. 372.

Thersalus bispinus. (*Phacodes bispinus*, *Pascoe, Trans. Ent. Soc.* ser. 3. i. p. 562.)

Hab. —?

Æbarina.

Æbarina, *Pascoe, antè*, p. 105.

Æbarina tristis, *Pascoe, antè*, p. 106.

Hab. South Australia.

Æ. CERESIOIDES, *Pascoe, antè*, p. 106.

Hab. South Australia.

Xystrocera.

Xystrocera, *Serville, Ann. Soc. Ent. de France*, ii. p. 69.

Xystrocera virescens, *Newman, Ann. & Mag. Nat. Hist.* v. p. 19.

Hab. Victoria; South Australia.

X. AUSTRALASIÆ, *Hope, Ann. & Mag. Nat. Hist.* 1842, ix. p. 429.

Hab. Port Essington.

CALLICHRONINÆ.

Callichroma.

Callichroma, *Latreille, Règ. An.* v. p. 113.

Callichroma CINDERELLA, *White, Cat. Long. Brit. Mus.* p. 156.

Hab. North coast.

PURPURICENINÆ.

Purpuricenus.

Purpuricenus, *Serville, Ann. Soc. Ent. de France*, ii. p. 568.

Cyclodera, *White, Stokes's Discoveries in Australia, App.* i. p. 510.

PURPURICENUS ANGASII. (*Purpuricenus* (*Cyclodera*), n. s., *White, Angas's South Australia Ill.* pl. 50. f. 17; *Cyclodera Angasii*, *White, Cat. Long. Brit. Mus.* p. 140. *P. Australicus*, *Thomson, Essai*, p. 203.)

Hab. New South Wales; South Australia.

P. QUADRINOTATUS. (*Cyclodera quadrinotata*, *White, Stokes's Discoveries in Australia*, i. p. 510, pl. 2. f. 6.)

Hab. Percy Islands; South Australia (Gawler); Queensland.

CALLIDIINÆ.

HYLOTYPES.

Hylotrupes, (*Serville*) *Mulsant, Long. de Fr.* p. 55.

HYLOTYPES ASEMOIDES. (*Callidium asemoides*, *Pascoe, Trans. Ent. Soc.* ser. 3. i. p. 563.

Hab. South Australia.

PRIONIDÆ.

IOTHERIUM.

Iotherium, *Pascoe, ib.* p. 569.

IOTHERIUM METALLICUM. (*Pœcilosoma metallicum*, *Newman, Ent. Mag.* v. p. 493.)

Hab. Tasmania; Victoria; New South Wales.

PHAOLUS.

Phaolus, *Pascoe, Trans. Ent. Soc.* ser. 3. i. p. 569.

PHAOLUS MACLEAYI, *Pascoe, ib.* p. 569, pl. 23. f. 3.

Hab. New South Wales.

SCELEOCANTHA.

Sceleocantha, *Newman, Ann. Nat. Hist.* v. 14.

SCELEOCANTHA GLABRICOLLIS, *Newman, ib.* p. 15.

Hab. Tasmania.

S. PILOSICOLLIS. (*Prionus pilosicollis*, *Hope, Trans. Ent. Soc.* ser. 1. i. p. 16, pl. 11. f. 1.)

Hab. Western Australia.

TOXEUTES.

Toxeutes, *Newman, Ann. Nat. Hist.* v. p. 15 (1840).

Oncinotus, *Erichson, Wiegmann's Archiv*, 1842, p. 219.

TOXEUTES ARCUATUS. (*Prionus arcuatus*, *Fabricius, Syst. El.* ii. p. 259; *Olivier, Ent.* iv. p. 34. no. 66, pl. 10. f. 38.)

Hab. Tasmania.

RHIPIDOCERUS.

Rhipidocerus, *Westwood, Trans. Ent. Soc.* ser. 1. iii. p. 70.

RHIPIDOCERUS AUSTRALASIÆ, *Westwood, ib.*, pl. 3. f. 5.

Hab. —?

MACROTOMA.

Macrotoma, *Serville, Ann. Soc. Ent. de France*, i. p. 137.

MACROTOMA SPINICOLLIS. (*Prionus spinicollis*, *Macleay in King's Survey, App. ii. p. 449.* *Mallodon Australis*, *Boisd. Voy. de l'Astrol. ii. p. 465.*)

Hab. Clarence River.

M. GEMELLA, *Pascoe, Trans. Ent. Soc. ser. 2. v. p. 15.*

Hab. New South Wales.

M. PAPHYRIA, *Pascoe, Journ. of Entom. ii. p. 244.*

Hab. South(?) Australia.

M. AUSTRALIS, *Erichson, Wiegmann's Archiv, 1842, p. 218.*

Hab. Tasmania.

CATYPNES.

Catypnes, *Pascoe, Journ. of Entom. ii. p. 243.*

CATYPNES MACLEAYI, *Pascoe, ib. p. 244.*

Hab. Richmond River.

MALLODON.

Mallodon, *Serville, Ann. Soc. Ent. de France, i. p. 137.*

MALLODON INSULARE, *Hope, Ann. & Mag. Nat. Hist. 1842, ix. p. 428.*

Hab. Port Essington.

M. FIGURATUM, *Pascoe, Trans. Ent. Soc. ser. 2. v. p. 14.*

Hab. New South Wales.

M. STIGMOSUM, *Newman, Ann. Nat. Hist. v. p. 15.*

Hab. —?

M. ODEWAHNII, *Pascoe, Journ. of Entom. ii. p. 242.*

Hab. South Australia.

M. CEPHALOTES, *Pascoe, ib. p. 242.*

Hab. Queensland.

M. EDULE. (*Cnemoplites edulis*, *Newman, Entom. p. 351.*)

Hab. Victoria.

M. JEJUNUM, *Pascoe, l.c. p. 243.*

Hab. Richmond River.

NOTOPHYSIS.

Notophysis, *Serville, Ann. Soc. Ent. de France, i. p. 158.*

NOTOPHYSIS LUCANOIDES, *Serville, ib. p. 159.*

Hab. South Australia (Gawler); Kangaroo Island.

The following is a list of doubtful species, either unknown to me, or probably erroneously enumerated as Australian; a few may be identical with some of the foregoing:—

MONOPLIA TETRA, *Newman, Zool. iii. p. 1016 (1845).*

- ANCITA CROSSOTOIDES, *Thomson, Syst. Ceramb.* p. 64.
 LAMIA PETRORHIZA, *Boisduval, Voy. de l'Astrol.* p. 502.
 L. PICTA, *Leach, Zool. Misc.* i. p. 14, pl. 4 (? Rhytiphora).
 MONOCHAMUS DESPERATUS, *Thomson, Arch. Ent.* i. p. 295.
 M. TOGATUS, *Perroud, Ann. Soc. Linn. de Lyon*, n. s. ii. p. 341 (1856).
 MORIMUS LUCTUOSUS, *Shuckard, Ent. Mag.* v. p. 510 (? Microtragus).
 GNOMA GIRAFFA, *Schreibers (Cerambyx), Trans. Linn. Soc.* 1801,
 p. 198.
 OLENECAMPTUS BILOBUS, *Fabricius (Saperda), Syst. Eleuth.* ii. p. 324.
 XYLOTOLES GRISEA, *Fabricius (Saperda), Syst. Eleuth.* ii. p. 324.
 OOPSIS NUTATOR, *Fabricius, Syst. El.* ii. p. 304 (Lamia).
 ISOSCELES PIGRA, *Newman, Zool.* 1851, cxxxi.
 COPTOMMA TEXTORIUM, *Newman, Ann. Nat. Hist.* v. p. 18.
 C. VIRGATUM, *Newman, ib.* p. 18.
 ENICODES FICHTELII, *Schrader (Cerambyx), Trans. Linn. Soc.* vi. p. 200.
 GLAUCYTES GRAPHICUS, *Boisduval (Leptocera), Voy. de l'Astrol.*
 p. 611, pl. 9. f. 17.
 LEPTOCERA VITTIFFERA, *Buquet in Guérin, Icon. Ins.* p. 250.
 RHAGIOMORPHA UNICOLOR, *Hope, Ann. Nat. Hist.* ix. p. 429.
 R. PLAGIATA, *Hope, ib.*
 R. SORDIDA, *Newman, Ann. Nat. Hist.* v. p. 21.
 NECYDALIS AURICOMUS, *Newman, Ann. Nat. Hist.* v. p. 16.
 HELIOMANES SIDUS, *Newman, ib.* p. 17.
 CERAMBYX? LATIVITTA, *Newman, Zool.* 1850, cxv.
 C.? SUBSERRATUS, *Newman, ib.* cxvi.
 CALLIRHOË DECORA, *Perroud, Ann. Soc. Linn. de Lyon*, n. s. 1856,
 p. 371 (? biguttata, Don.).
 COPTOCERCUS SEXMACULATUS, *Hope, Trans. Zool. Soc.* iii. p. 195.
 PHORACANTHA GRACILIS, *Perroud, ib.* (? senio, Newm.).
 P. IMBELLIS, *Newman, Entom.* p. 352 (? Epithora dorsalis, MacL.).
 STENOCHORUS ACANTHOCERUS, *Hope, Trans. Zool. Soc.* iii. p. 193.
 S. LATUS, *Hope, ib.* p. 190.
 S. TUNICATUS, *Hope, ib.* p. 194.
 S. UNDULATUS, *Hope, ib.* p. 192.
 S. ASSIMILIS, *Hope, ib.* p. 193.
 S. VICINUS, *Hope, Ann. Nat. Hist.* ix. p. 248.
 S. CRUCIGER, *Hope, ib.*
 PLOCÆDERUS AUSTRALASIÆ, *Hope, ib.*

- CLYTUS SEX-MACULATUS, *Donovan, Ins. New Holl.* pl. 5. f.
 C. ATTENUATUS, *Boisduval, Voy. de l'Astrol.* p. 485.
 C. V-ALBUM, *Boisduval, ib.* pl. 9. f. 23 (?*Zoedia*).
 CALLIDIUM EROSUM, *Macleay, King's Voy. App.* ii. p. 450.
 C. FABER, *Newman, Ann. Nat. Hist.* v. p. 18.
 C. AUSTRALE, *Boisduval, Voy. de l'Astrol.* ii. p. 480.
 C. MOROSUM, *Boisduval, ib.* p. 480.
 C. FUNESTUM, *Boisduval, ib.* p. 480.
 C. FLAVOMACULATUM, *Blanchard, Voy. au Pôle Sud,* iv. p. 273, pl. 16. f. 8.
 PHYMATODES* VARIABILIS, *Linnæus, Faun. Suecica,* 669, p. 192 (introduced).
 HYLOTYPES BAJULUS, *Linnæus, ib.* 672, p. 193 (introduced).
 PITHANOTES FALSUS, *Newman, Ann. Nat. Hist.* v. p. 16 = ♀ *Cacosceles Œdipus*.
 DORX PENTAMERA, *Newman, ib.* p. 16.

The following new genera and species of *Prionidæ* have been published by M. J. Thomson. They are unknown to me; but some of them may probably be identical with those enumerated in the List:—

- ARIMASPES HOWEI, *Syst. Ceramb.* p. 302.
 DIOCLIDES PRIONOIDES, *ib.* p. 303.
 EURYNOSSA SERVILLEI, *ib.* p. 304.
 TEISPES DORSALIS, *ib.* p. 305.

EXPLANATION OF THE PLATES.

TAB. III.

- Fig. 1. *Allotisis discreta*.
 2. *Oxymagis Grayii*.
 3. *Igenia stigmosa*.
 4. *Essisus dispar*.
 5. *Zygocera pentheoides*.
 6. *Neissa inconspicua*.
 7. *Hathliodes grammicus*.
 8. *Aposites pubicollis*.
 9. *Microtragus sticticus*.

TAB. IV.

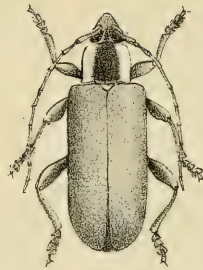
- Fig. 1. *Ipomoria tillides*.
 2. *Xypeta grillaria*.
 3. *Sidis opiloides*.
 4. *Sisyrium tripartitum*.
 5. *Atesta bifasciata*.
 6. *Paphora modesta*.
 7. *Tryphocharia Odewahnii*.
 8. *Xystæna vittata*.

[ERRATUM, *antè* p. 96, *line* 1, *after* former *read* except in its broad prothorax.]

* The heteromerous genus *Phymatodes* of M. Blanchard was described some years after M. Mulsant had used the same word for the Longicorn genus. I have therefore to propose that M. Blanchard's name be changed to *Phymatestes*.



1



2



3



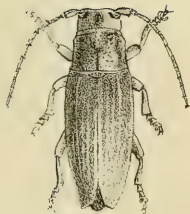
4



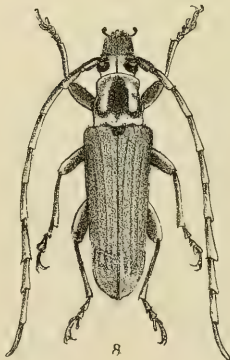
5



6



7



8



9



